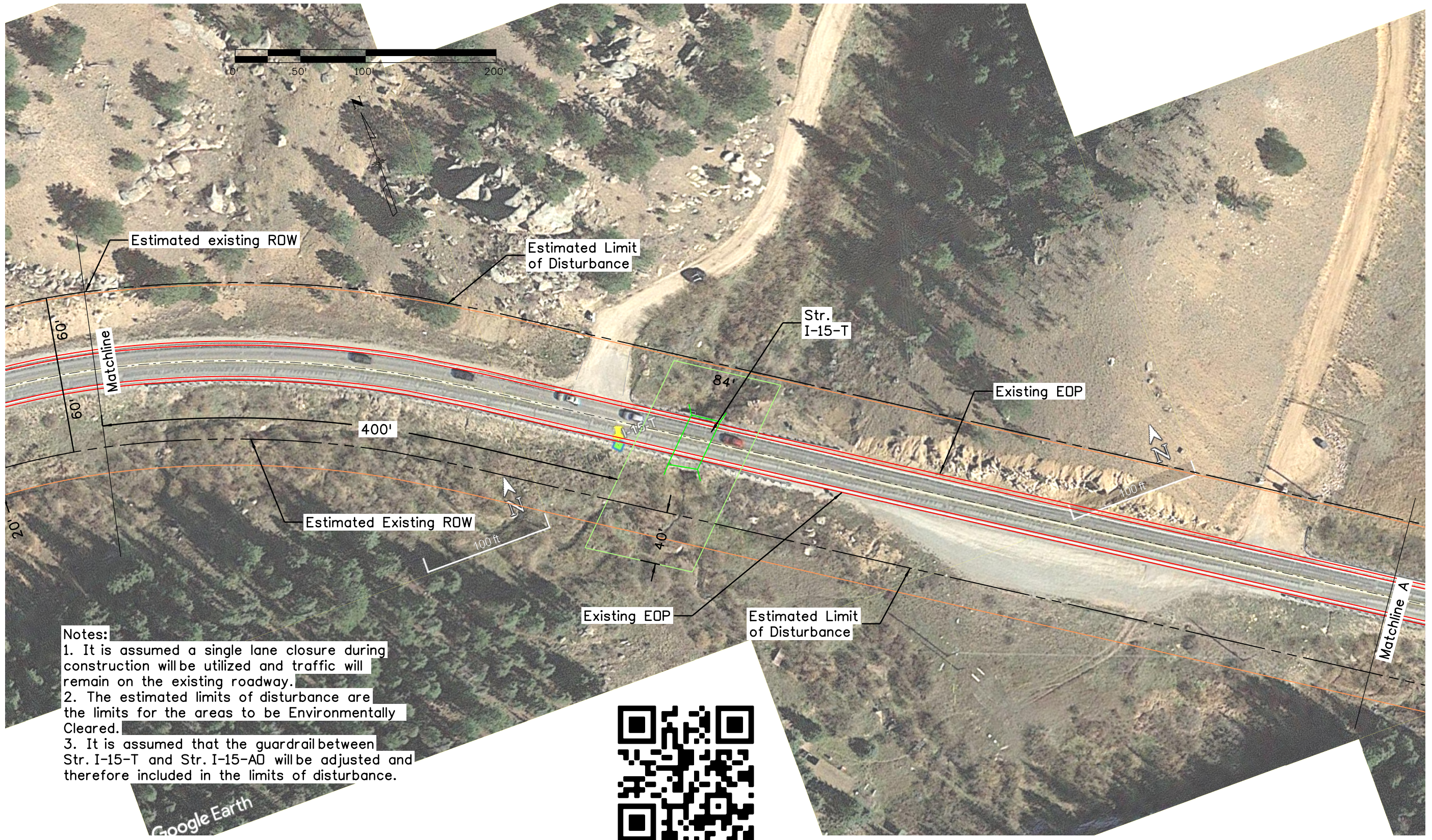


baileyc 12:11:47 PM C:\Users\baileyc\Desktop\000_23398_Bridges_Design_Build\23558_US24_Aerials_I-15-AD_I-15-T_23558_US24_I-15-T_Sheet_02.dgn



- Notes:**
1. It is assumed a single lane closure during construction will be utilized and traffic will remain on the existing roadway.
 2. The estimated limits of disturbance are the limits for the areas to be Environmentally Cleared.
 3. It is assumed that the guardrail between Str. I-15-T and Str. I-15-AD will be adjusted and therefore included in the limits of disturbance.



Print Date: 6/3/2020	
File Name: 23558_US24_I-15-T_Sheet_02.dgn	
Horiz. Scale: 1:75	Vert. Scale: As Noted
Unit Information	Unit Leader Initials

Sheet Revisions		
Date:	Comments	Init.

Colorado Department of Transportation

5615 Wills Blvd
Pueblo, CO 81008
Phone: 719-546-5753
FAX: 719-546-5414

Region 2 **JLB**

As Constructed
No Revisions:
Revised:
Void:

US 24 STR. I-15-T ENVIRONMENTAL CLEARANCE AREA			
Designer:	CAB	Structure Numbers	I-15-T
Detailer:	.	Structure Numbers	I-15-AD
Sheet Subset:	.	Subset Sheets:	2 of 4

Project No./Code
FBR-R200-267
23558
Sheet Number